

**RoHS Compliant HF**

REV.	ECN.NO.	MODIFY.CONTENT
X1	2023-03-14	NEW

- NOTES:
- FINISH:
    - HOUSING: LCP BLACK,UL94V-0.
    - CONTACT: HIGH CONDUCTIVITY COPPER, INTEGRAL NICKEL BASE 50u"MIN, GOLD (SEE P/N) PLATED IN CONTACT AREA, GOLD FLASH PLATED IN SOLDER AREA,
    - GROUND: BRASS, 80u" MIN MATTE TIN PLATED OVER
  - ELECTRICAL:
    - RATED VOLTAGE: SIGNAL PIN AC 50 V.  
POWER PIN AC 200 V.
    - CURRENT RATING: SIGNAL PIN 0.5A.  
POWER PIN 5.0A.
    - DIELECTRIC WITHSTANDING VOLTAGE: SIGNAL PIN 150V AC/MINUTE.  
POWER PIN 600V AC/MINUTE.
    - CONTACT RESISTANCE: SIGNAL PIN 60mΩ MAX.  
POWER PIN 60mΩ MAX.
    - INSULATION RESISTANCE: SIGNAL PIN 100V DC/0.1S/100MΩ  
POWER PIN 250V DC/0.1S/1000MΩ
  - SALT SPRAY TEST:
    - CONCENTRATION IS 5%, THE TEMPERATURE IS 35±2°C, TEST TIME 8H MIN,NO OXIDATION OR RUST
    - MAX PROCESSING TEMP:265°C SECONDS 40S
    - OPERATION TEMPERATURE:-40°C TO +125°C.
    - WARRANTY PERIOD: 6 MONTHS

FBO1-050FXXX0604XX

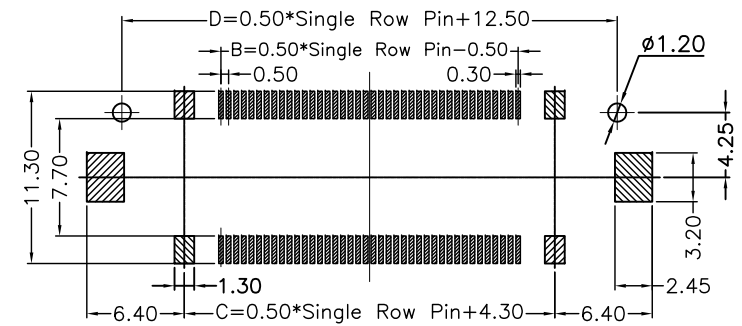
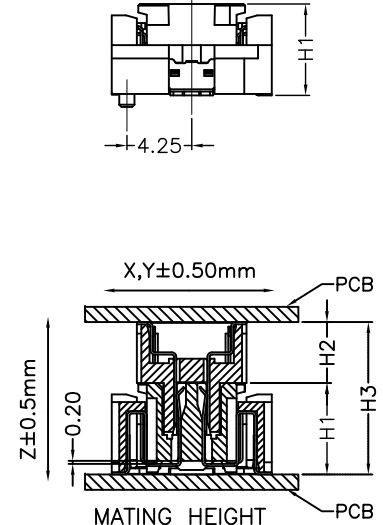
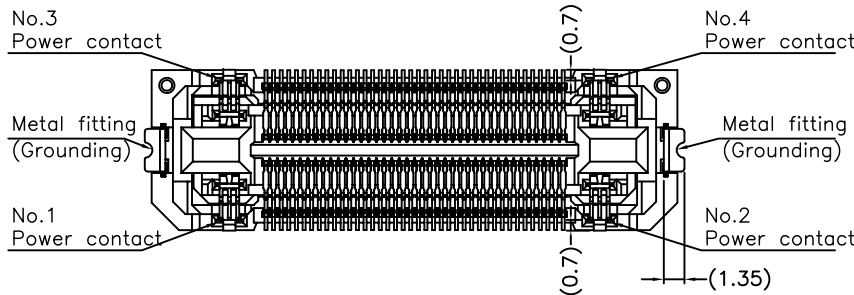
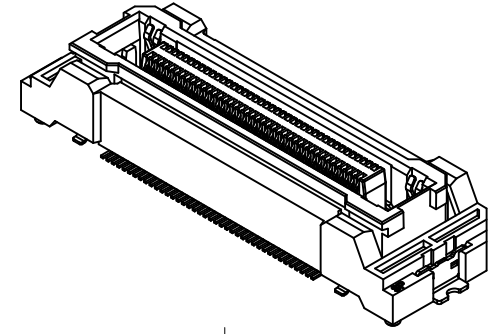
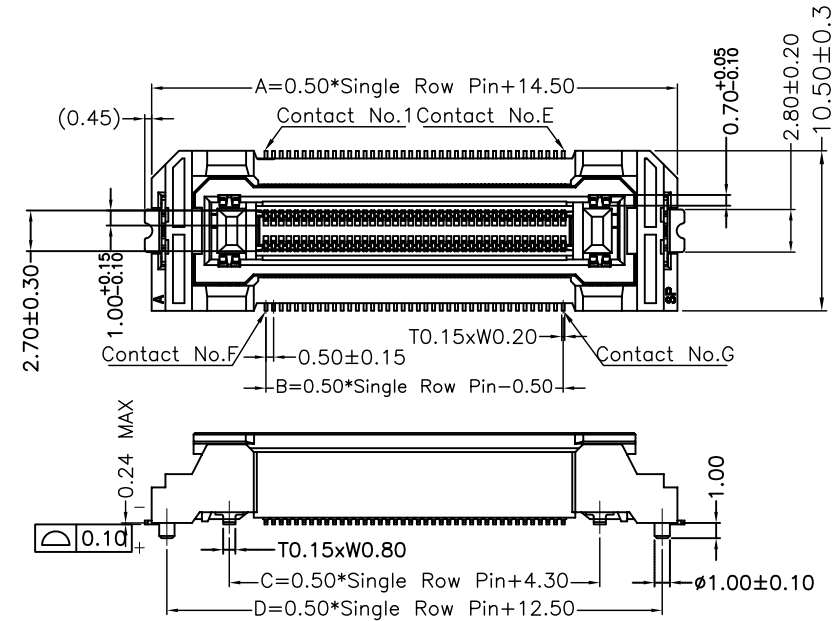
Pin 数码  
SEE TABLE  
020=2x10PIN  
~  
120=2x60PIN

塑胶高度:  
060=6.00mm("H1")

-11: Au 15u"  
-12: Au 30u"


TABLE:

No. OF PIN	A	B	C	D
020=2x10PIN	19.50	4.50	9.30	17.50
030=2x15PIN	22.00	7.00	11.80	20.00
040=2x20PIN	24.50	9.50	14.30	22.50
050=2x25PIN	27.00	12.00	16.80	25.00
060=2x30PIN	29.50	14.50	19.30	27.50
080=2x40PIN	34.50	19.50	24.30	32.50
100=2x50PIN	39.50	24.50	29.30	37.50
120=2x60PIN	44.50	29.50	34.30	42.50



RECOMMENDED PCB LAYOUT(TOP SIDE)  
PCB BOARD TOLERANCE±0.05

MATING HEIGHT	H1	H2	H3
8.0mm	6.00	2.00	8.00
10.0mm		4.00	10.00
12.0mm		6.00	12.00
14.0mm		8.00	14.00
19.0mm		13.00	19.00

GENERAL TOLERANCE	DWG.NO.	F B01-050FXXX060400	PART.NO.	F B01-050FXXX0604XX	DRAWN	Brian 2023-03-14	UNIT	mm	SCALE	1:1
x.±0.50	REV.	X1	TITLE	浮动板对板0.5Pitch母座	CHECKED		 东莞市欧联电子科技有限公司 DONGGUAN OLN ELECTRONICS TECHNOLOGY CO., LTD.			
.x±0.25	SIZE	A4	SHEET	1 OF 1	APPROVED					
.xx±0.15										